

Himmelstrutz GNOME Guitar Amplifier

Owner's Manual (Serial. #010-)

Congratulations on your choice of **Himmelstrutz GNOME**—your analogue alternative/complement to your valve amplifier which may sound fantastic but is big and heavy and requires maintenance and probably much electrical energy/power.

Tip: Read this document before connecting the wires to power up and play your **Himmelstrutz GNOME**, which will give you a better understanding about this little unique Swedish product.



Setup/usage:

First of all: Adjust the mighty **Vol** control to zero. The **Vol** sets the Output Volume=the **Output Power**.

1. Speaker

Connect a speaker of 4 Ω or more to the **Speaker Output** 1/4" jack.

Note: As there's no speaker included with **Himmelstrutz GNOME**, it's your mission to obtain one or plenty speaker cabinet(s) aimed for guitar amplifiers—which ends up in a total impedance of 4 Ω or more!

Please check this out with your favourite local music dealer or online.



2. Instrument In

Connect your instrument, or the output from your pedal(s) to the **Instrument Input** 1/4" jack.



3. Power supply

A) Connect the included, dedicated **AC/DC adapter** primary connection to a grounded mains outlet (100 to 240V AC/50 or 60 Hz) with the included **Mains Power Lead**

B) Connect the The **AC/DC adapter** secondary plug to the **Himmelstrutz GNOME 24V DC jack**

Connecting primary of AC/DC Power

Connecting the secondary of AC/DC adapter

Note: Use **ONLY** the included, dedicated 24V AC/DC adapter for powering **Himmelstrutz GNOME**.

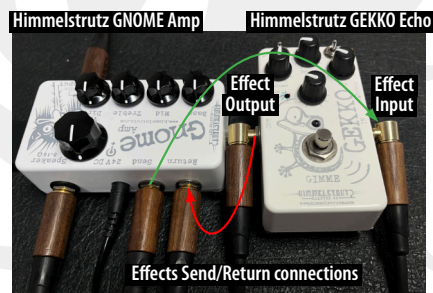
4. Effects Loop

Effects, which we all love, such as reverb, delay or modulation effects are well suited for connecting to the **Himmelstrutz GNOME** serial effects loop where the **effect input** is connected to **Himmelstrutz GNOME Send** and the **effect output** is connected to **Himmelstrutz GNOME Return**

Click me if you have questions!



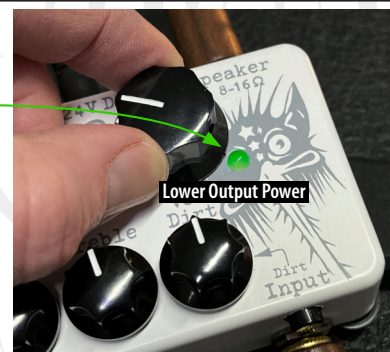
Tip: As the physical footprint of **Himmelstrutz GNOME** is very, very, very, very, reduced there's also a limited space for connectors, so we recommend you to use **Straight** instead of **Right** angle connectors, but if you fancy right angle connectors no matter, it's of course up to you.



5. Mains- and Output Power Status LED

When the power supply is connected, the power indicator (LED) of **Himmelstrutz GNOME** shines up in a **green** colour. This indicates **Himmelstrutz GNOME** is working and when you play @ lower power (the **Vol** control is set below noon/<50%) the LED will mostly remain green.

When you increase the **Vol** control the LED will change colour from green to **orange** and finally get **red** at really high **Vol** settings (about 50 watts max) to warn you about the beautiful danger of higher sound levels, which in this context might get loud and harmful to you and your dog's ears.



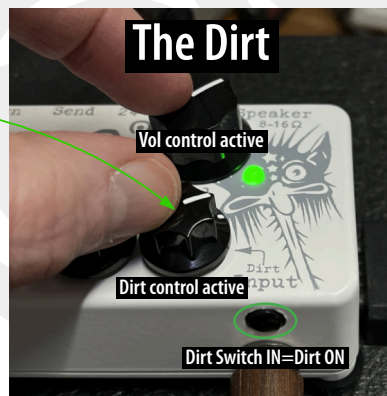
6. The Clean & The Dirt!

Himmelstrutz GNOME is equipped with 2 main characters/channels: **The Clean & The Dirt**.

A. The Clean: To use the **Clean** channel, set the front panel **Dirt switch** in OFF mode (=push button out) and use the **Vol control** plus the **Bass, Mid & Treble** controls to adjust the output character/level. In this state the **Dirt** control has no function and the output character will be focused on clean, shimmering sounds—which *can* get a bit overdriven on higher **Vol control** settings (@ 65 to 100%).

B. The Dirt: If you want even more, **Himmelstrutz GNOME** offers real musical, touch sensitive overdrives/distortions. Set the front panel **Dirt switch** in ON mode (=push button in). In this state you adjust the **Dirt level** with the **Dirt** control to be adjusted from light, smooth overdrive into a rough distortion—though **GNOME** never goes *metal*.

We recommend you to start with the **Dirt control** set at noon/50% and from there use your ears and tongue to find preferred amounts of overdrive/distortion. Use the **Vol control** to set the **Output Power** and also the **Bass, Mid & Treble** for any further tone character adjustments. If you need even more, or different kinds of overdrives, **Himmelstrutz GNOME** also works great with pedals!



7. Adjusting the tone/playing your instrument

A: Make sure the huge and horrifying **Vol control** is still set to minimum (0).

B: Check that your instrument is connected to **Input**.

C: Adjust the **Dirt** and the tone controls **Bass, Mid & Treble** to middle position/noon/50%.

D: Set the front **Dirt switch** to IN (Dirty) or OUT (Clean) mode and lightly increase the **Vol control**. Then increase or decrease the **Dirt** control simultaneously, or later, or before, whatever you like! Play some notes and try your way until you find your sounds/levels/tone characters. If you need more or less overdrive, push in/push out the front panel **Dirt switch** in case you don't know why or what you're doing now ... or whatever.

Note 1: Despite the **Himmelstrutz GNOME** tiny format, just by turning 5 little controls and pushing a switch you can make this box roar and scream like huge, classic older brothers which uses them stone-age vacuum valves. Isn't it funny! Or is it not?

Note 2: If you need to change the tone character even more, in case you connected pedals in front of **Himmelstrutz GNOME**—or connected effects in the serial **Send/Return** effects loop—then adjust the **Dirt** and the **Bass, Mid, Treble & Vol** before finally landing in destination wonderful!

8. Summary

At Himmelstrutz Elektro Art we wish you will get good use of and find a lot of inspiring sounds and feel in company with your scary little evil **Himmelstrutz GNOME**!

Take care of your hearing: if you play loud, please use ear protection, which may be forgotten when you experience irresistible sounds. But don't forget this as loud sounds may be harmful to your ears—it's not particularly cool hitting yourself deaf by not thinking about passing that next corner...

For questions or comments, don't hesitate to contact Himmelstrutz Elektro Art.

Sincerely,

Joakim Hedeby,
Himmelstrutz Elektro Art, Sweden

Himmelstrutz GNOME Connections/Controls



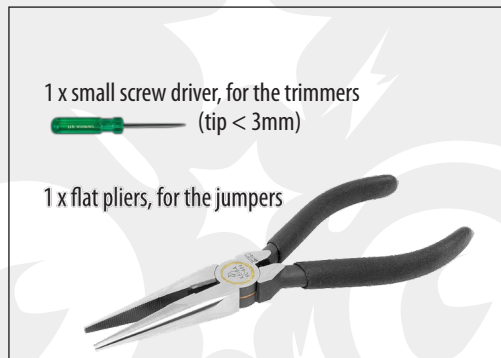
Technical Specification

Model	Model Family	Technology	Channels
Himmelstrutz GNOME	Himmelstrutz GNOME	100% Solid state/sounding like valve (No digital/No OP-Amps)	2
Output power	Outputs	Inputs	Controls
8 Ω approx 30 watt * 16 Ω approx 15 watt * (4 Ω approx 50 watt **)	1 x Speaker (8 to 16 Ω) via 1 x 1/4" Jack Socket 1 x Series Effects Loop Send via 1 x 1/4" Jack Socket (1k Ω output impedance)	1 x Input via 1 x 1/4" Jack Socket (1 M Ω input impedance) 1 x Series Effects Loop Return via 1 x 1/4" Jack Socket (1M Ω input impedance)	Bass, Mid, Treble, Dirt, Vol (via 5 potentiometers & 1 switch)
* @ about 10 % distortion, which for electric guitars usually is a good thing. ** Less than 4 Ω is not recommended/may overheat/damage Himmelstrutz GNOME			
Dimensions (Controls & feet included)			
Weight (kg/lbs) 0,7 kg/1,54 lbs	Width (mm/inch) 111,6/4,39	Height (mm/inch) 60,0/2,36	Depth (mm/inch) 61,6/2,42

Himmelstrutz GNOME Internal Controls/Settings

Note: Adjust the internal settings ONLY if you're sure what & why you're doing these things—otherwise don't hesitate to contact [Himmelstrutz Elektro Art](#) for assistance! To access the internal settings you need to unscrew 4 external screws with a Philips screwdriver, on the bottom plate, and you'll also need a few tools for the internals:

Tools needed to adjust the Internal Controls (trimmers+jumpers):

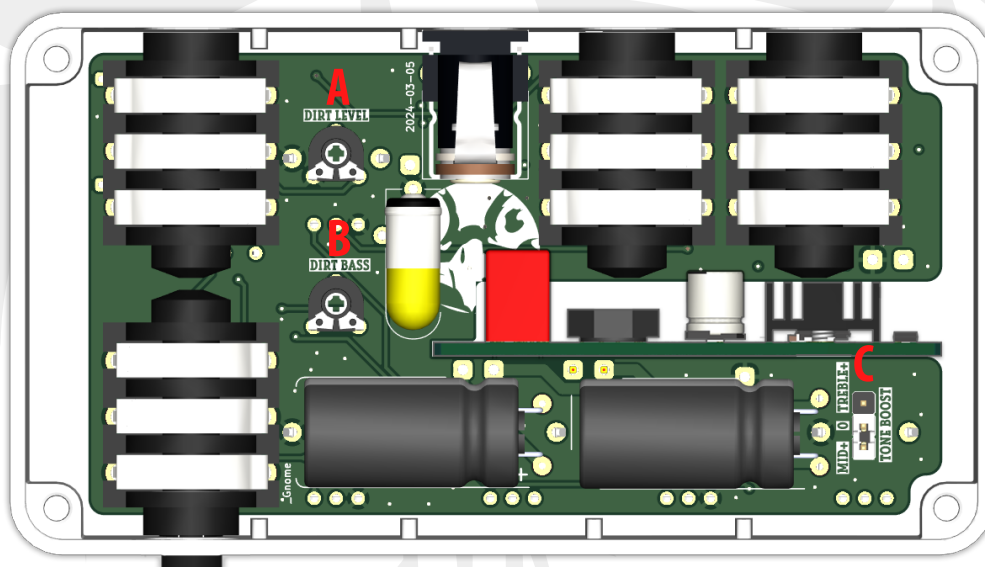


A: DIRT LEVEL TRIMMER (* 30-70%)

B: DIRT BASS TRIMMER (* 30-70%)

C: TONE BOST SWITCH (*MID+/OFF/TREBLE+)

* = Default setting



As mentioned earlier: for questions, comments or [assistance](#) don't hesitate to contact [Himmelstrutz Elektro Art](#) in Sweden.

Sincerely,



Joakim Hedeby,
Himmelstrutz Elektro Art, Sweden